

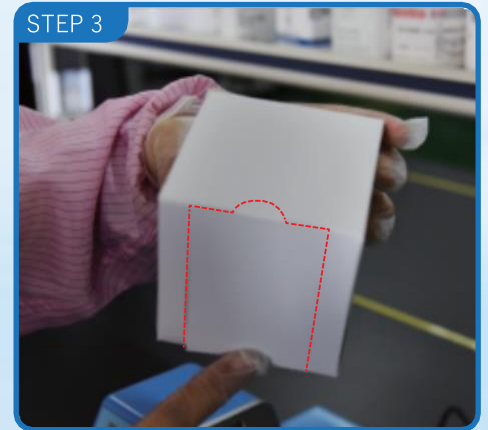
Instructions for loading membranes dispenser with Continuous Packaging Gridded Membrane Filters



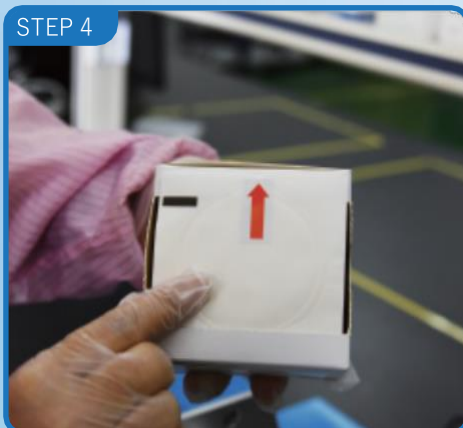
Insert power cord



Turn on
(press once)



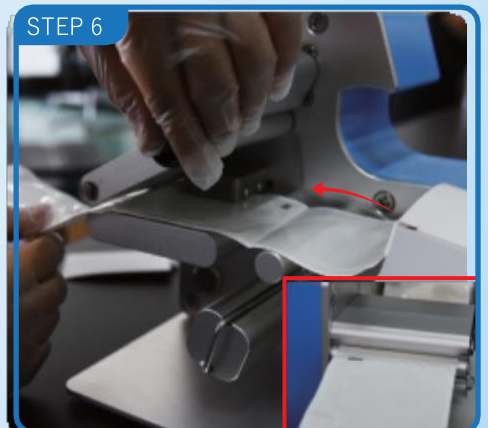
Open membrane
filter box along the
tear line



Confirm the opening
direction of the box
(arrow facing up)



Put the box on the
membrane dispenser



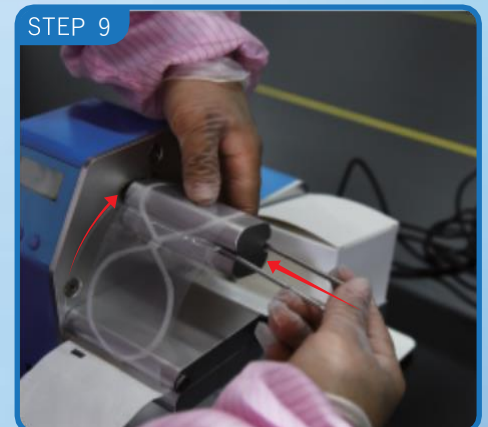
Install gridded membrane
filter in the direction of the
arrow



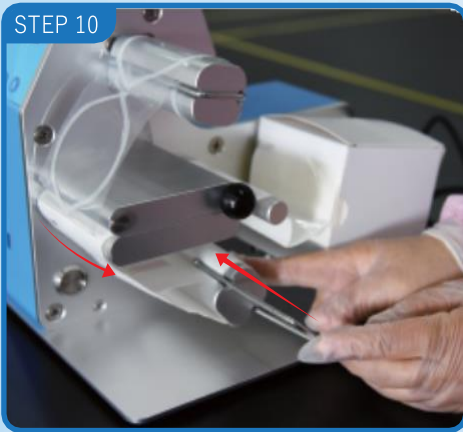
Reserve 3 gridded
membrane filter



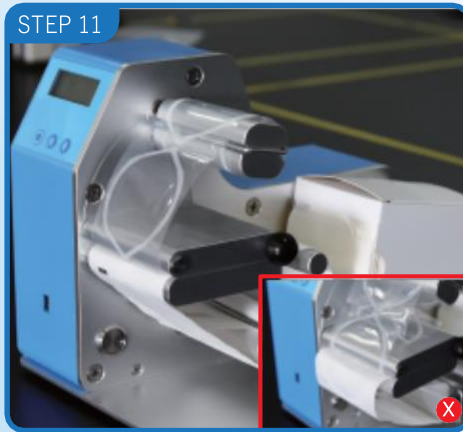
Separate the upper film
from underside paper



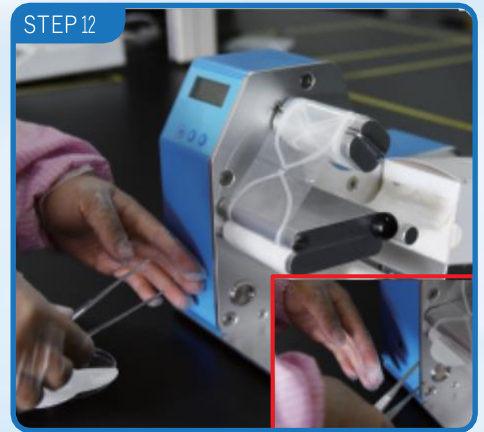
Wind the upper film
and insert clip



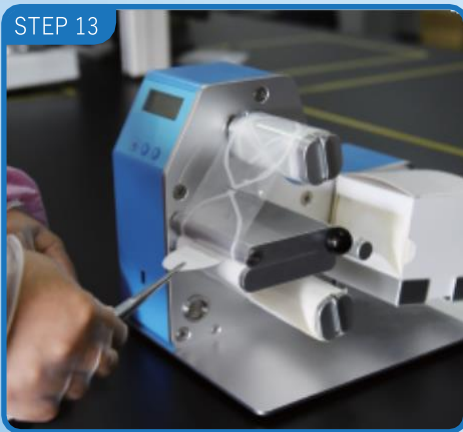
Wind the underside and insert clip



Installation is complete



Start test
(Place left hand 0-3cm in front of the sensing area)

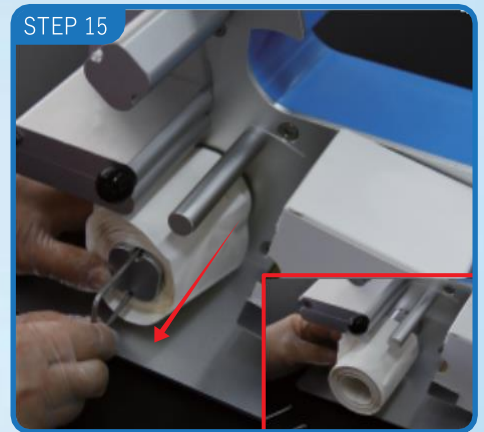


Remove membrane



Test is complete

Remove the upper film



Remove underside paper



Power off